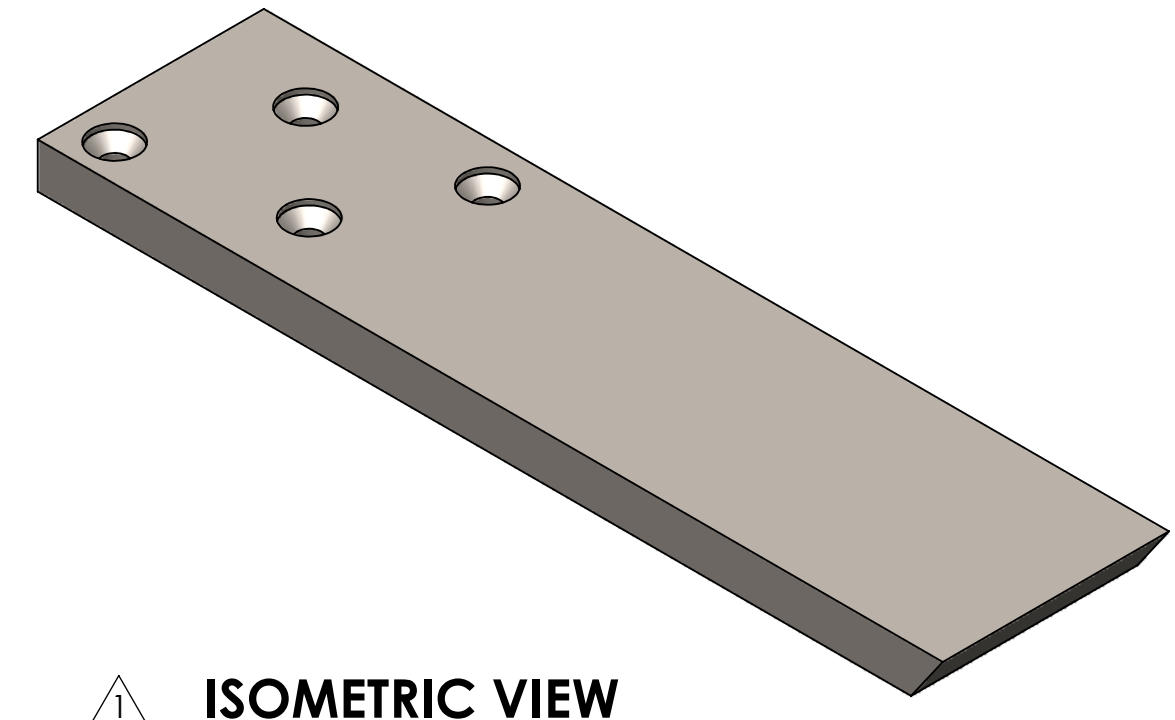


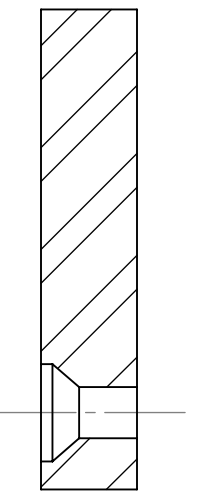
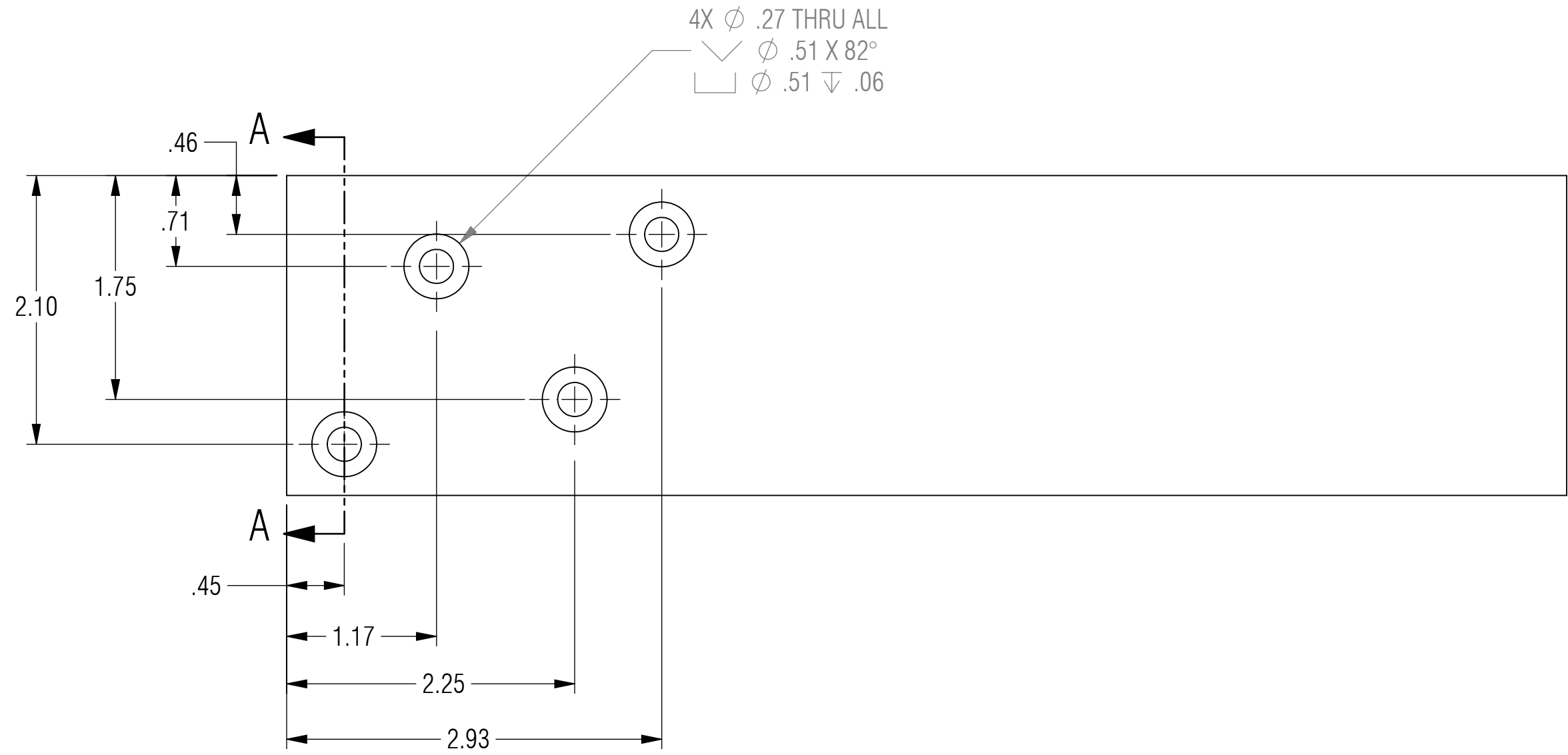
NOTES: UNLESS OTHERWISE SPECIFIED

- 1. MATERIAL: ASTM A36, HOT ROLLED STEEL, OR CENTERLINE STEEL, LLC APPROVED EQUIVALENT.
- 2. ALL DIMENSIONS ARE TO THEORETICAL SHARP.
- 3. REMOVE BURRS AND BREAK ALL SHARP EDGES .03 MAX.
- 4. ALL DIMENSIONS ARE IN INCHES UNLESS STATED OTHERWISE.
- 5. PARTS SHALL BE FREE OF GREASE AND CUTTING FLUID.

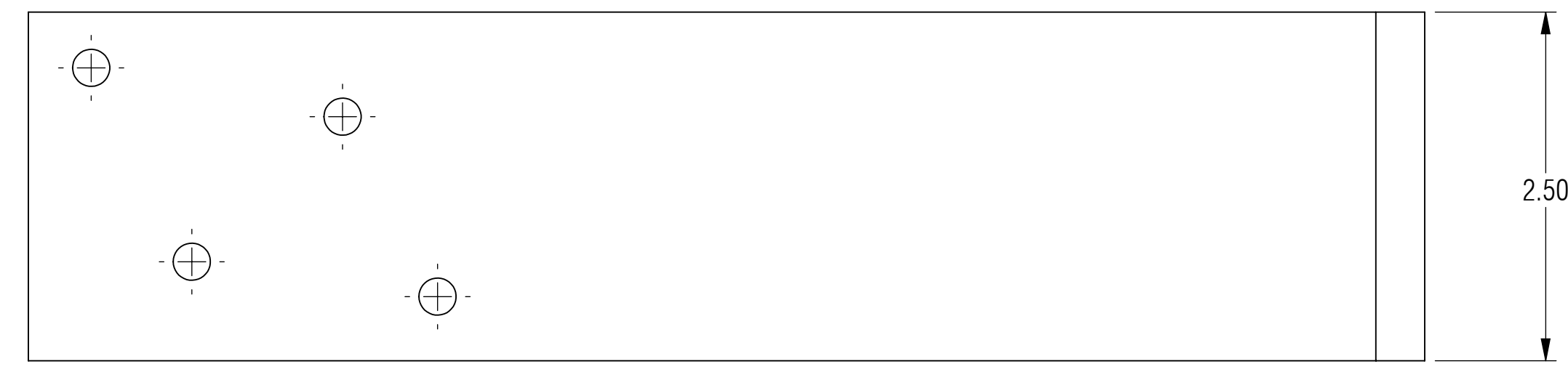
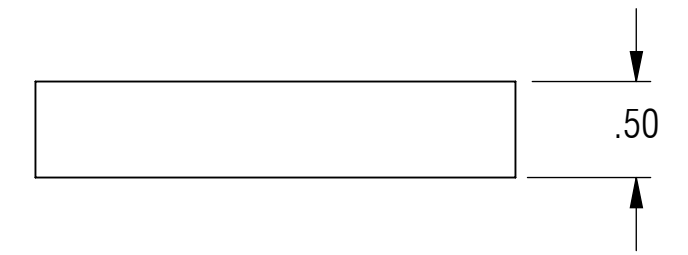
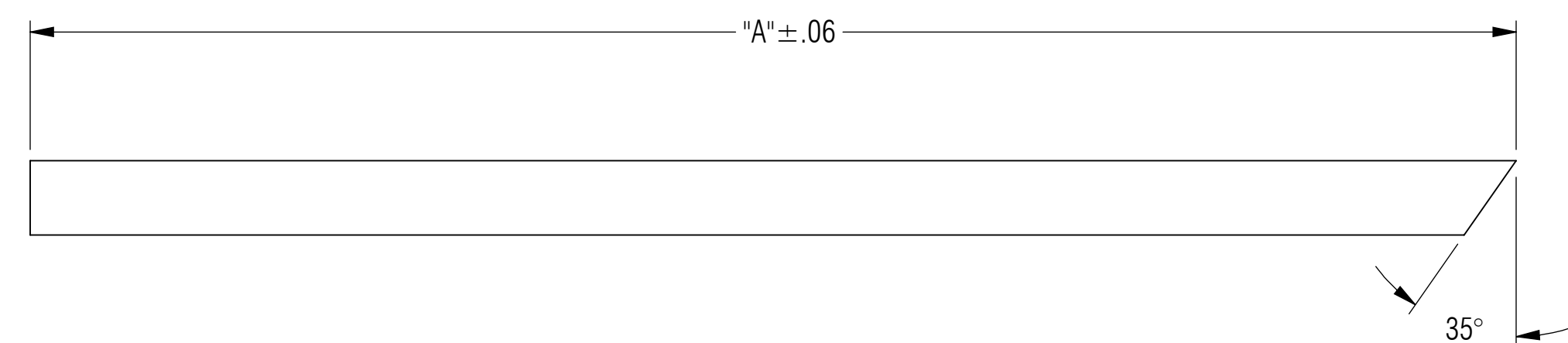
REVISION STATUS - ALL SHEETS ARE THE SAME REVISION				
ZONE	REV.	DESCRIPTION	DATE	APPROVED
	X1	DEVELOPMENT	06/30/2013	KRH
	X2	ADDED ASTM A36 MATERIAL CALLOUT ADDED ±.06 TOLERANCE TO "A" INCH LENGTH MODIFIED COUNTERSINK THRU HOLE (NOW) .27 (WAS) .26 ADDED CONFIGURATION TABLE	07/20/2013	KRH



ISOMETRIC VIEW
FOR REFERENCE ONLY



SECTION A-A



CONFIGURATION TABLE	
	"A"
CSP-0003-7	7.00
CSP-0003-8	8.00
CSP-0003-9	9.00
CSP-0003-10	10.00
CSP-0003-11	11.00
CSP-0003-12	12.00
CSP-0003-13	13.00
CSP-0003-14	14.00
CSP-0003-15	15.00
CSP-0003-16	16.00
CSP-0003-17	17.00
CSP-0003-18	18.00
CSP-0003-19	19.00
CSP-0003-20	20.00
CSP-0003-21	21.00

RELEASED

UNLESS OTHERWISE SPECIFIED: DIMENSIONS ARE IN INCHES		ENGINEER		<p>A CENTERLINE STEEL, LLC DIVISION</p>	
TOLERANCES ARE:		ENGINEER			
ANGLES		ENGINEER			
.XX ± .01	XX° ± 1°	CHECKED	CAS 07/20/2013		
.XXX ± .005		DRAWN	KRH 06/30/2013		
INTERPRET DRAWINGS IN ACCORDANCE WITH:		MANAGER APPROVAL		THE INFORMATION ON THIS DRAWING IS PROPRIETARY AND SHALL NOT BE DISCLOSED, USED, OR DUPLICATED FOR PROCUREMENT OR MANUFACTURING PURPOSES WITHOUT THE EXPRESS WRITTEN CONSENT OF CENTERLINE STEEL, LLC	
ASME Y14.100 ENGINEERING DRAWING PRACTICES	ASME Y14.38 ABBREVIATIONS	THIRD ANGLE PROJECTION			
ASME Y14.5 DIMENSIONING AND TOLERANCING	ASME Y14.6 SCREW THREAD REPRESENTATION				
ASME Y14.8 CASTINGS, FORGINGS & MOLDED PARTS	AWS A2.4 WELDING SYMBOLS	SIZE	D	SCALE	1:1
IEEE STD 315 SYMBOLS FOR ELECTRICAL AND ELECTRONIC DIAGRAMS		CAGE CODE		DRAWING NO.	CSP-0003
USED ON		APPLICATION		REV	X2
				SHEET	1 OF 1